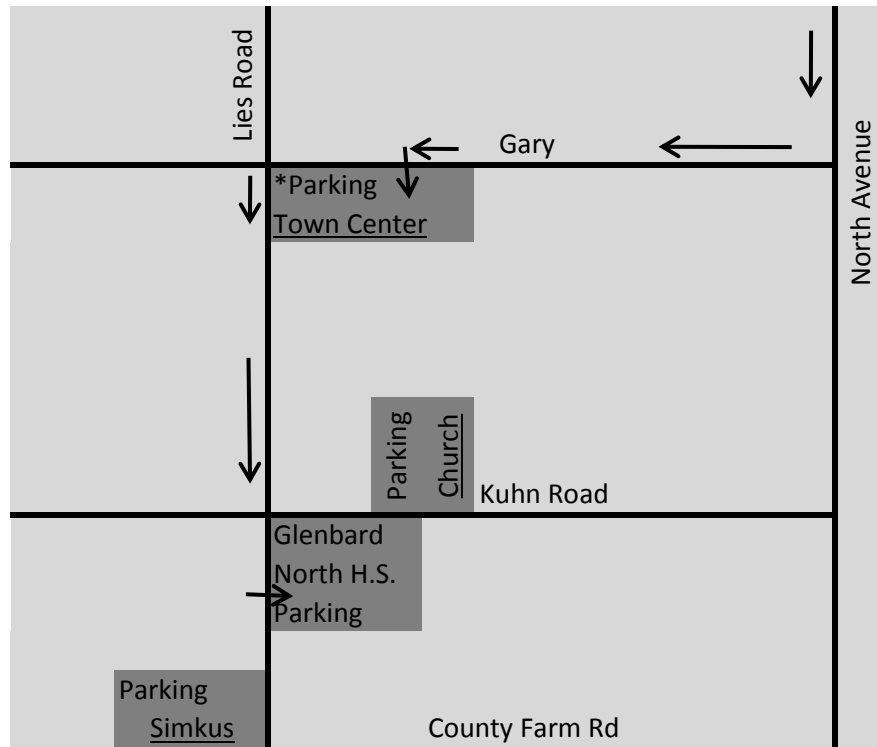
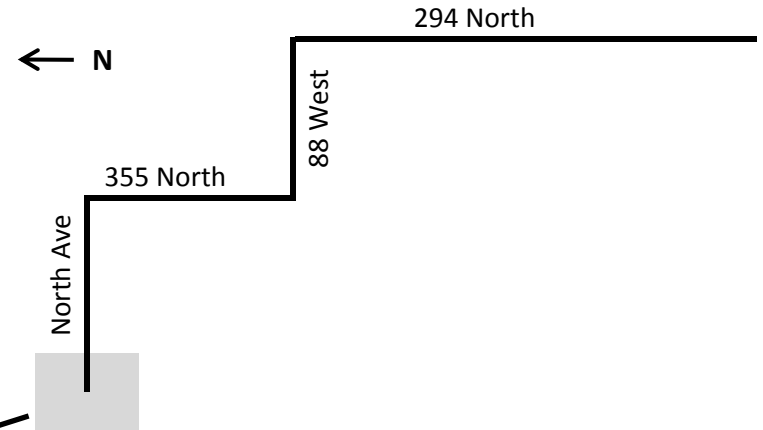


Directions to Glenbard North

1. 294 North to 88 (approx. 17 miles)
2. 88 West to 355 (approx 6.5 miles)
3. 355 North to North Ave (approx. 6 miles)
4. West on North Ave. to Gary (approx. 5 miles)
5. North on Gary to Lies (approx. 1.5 miles)
 - *Parking available **with shuttle** on the southwest corner of Lies and Gary
6. West on Lies to Kuhn (approx. 1 mil)
7. School located on the corner of Lies and Kuhn Road. Parking on North side of field



Parking
Saturday, November 21, 2009

In addition to the state semi-final football game, we will also be hosting a theatre production. The parking lot on the east side of the building, off of Kuhn Road, will be reserved for parents and community members attending the theatre performance. On-site parking will be limited for the football game so please plan accordingly and car pool if possible. There are approximately 400 spots in the north lot.

Parking Options:

- >GBN main lot has approximately 400 spots
- >Simkus Center, located on Lies Road (west of GBN)
- >Church parking lot, located on Kuhn Road (east of GBN)
- >Surrounding residential neighborhood
- >Ross Ferraro Town Center, located on Lies and Gary
- >>Shuttle buses will be provided from the Ross Ferraro Town Center beginning at 6:00 pm